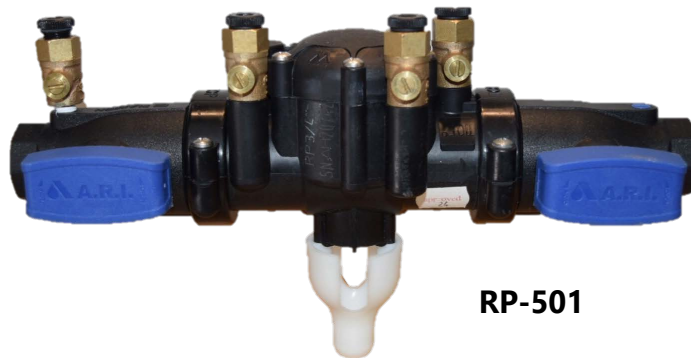


Parts Price List

RP-501 Reduced Pressure Backflow Preventer 1/2", 3/4", 1"

2017

Catalog Part Number	Description	No. refer to drawing	Price
0466-0501	Cover Assembly	1	\$42.50
0466-9601	Relief Valve Assembly & Spring	2	\$62.00
0266-7696	Relief Valve Spring	3	\$16.50
0266-3101	Retainer	5	\$9.00
0466-0276-IN	Inlet Check Valve Assembly #1	4	\$30.00
0466-0276-OUT	Outlet Check Valve Assembly #2	6	\$30.00
0310-7318BPM-14NTFBA	Test Cock 1/8"	9	\$15.00
0466-4801NT	Adaptor Assembly NPT 1"	7, 10	\$19.50
0466-4850NT	Adaptor Assembly NPT 1/2"	7, 10	\$19.50
0466-4834NT	Adaptor Assembly NPT 3/4"	7, 10	\$19.50
0466-99	Clamp Assembly	8	\$21.00
0266-5101	Drainage Funnel	12	\$19.50
0466-5699-01-RK	Relief Valve Rubber Repair Kit		\$15.00
0466-565499-01-CRK	Complete Rubber Repair Kit		\$22.50
0466-545601-RK	Check Rubber Repair Kit		\$20.00



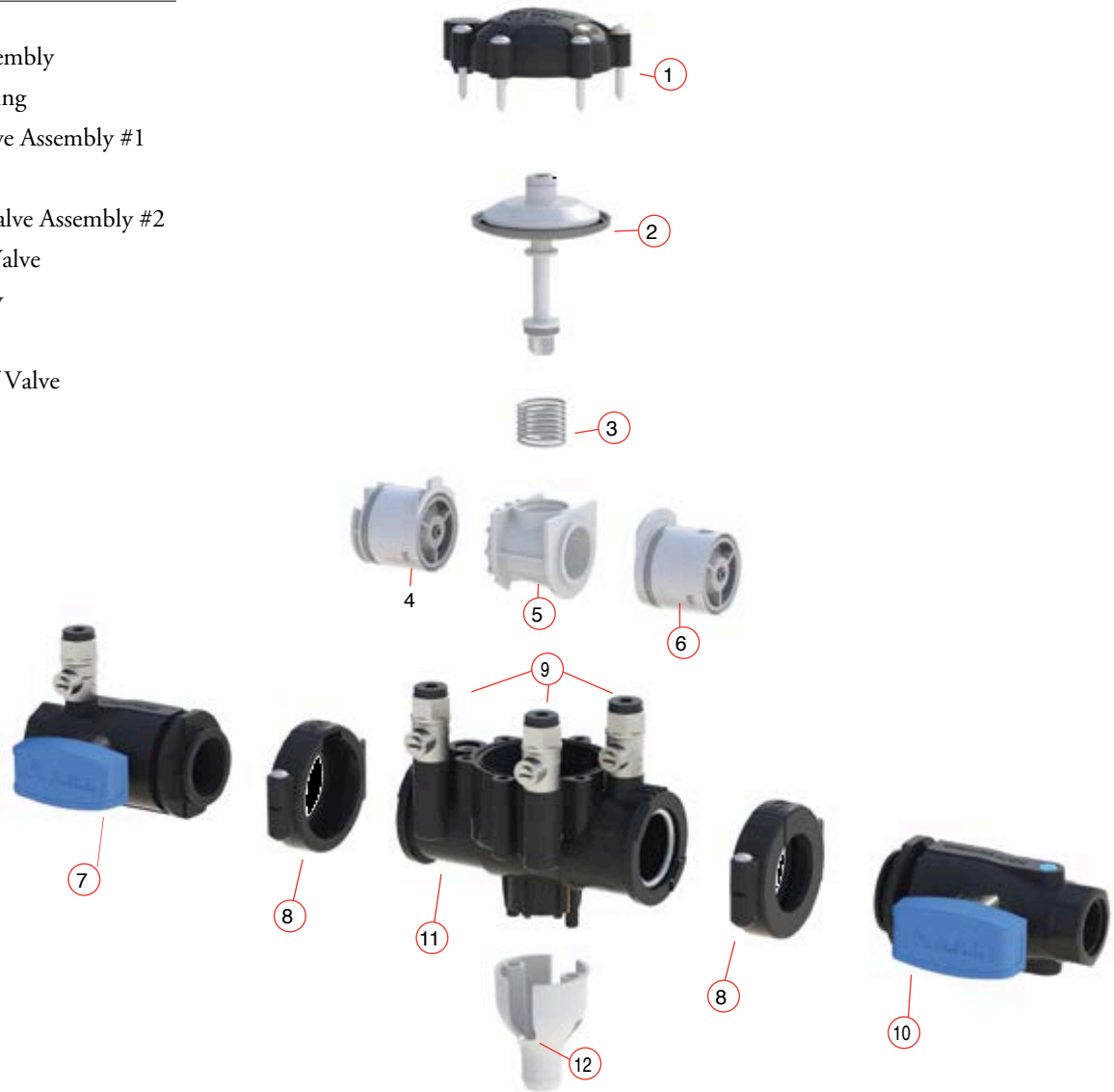
RP-501

RP-501 Reduced Pressure Backflow Preventer 1/2", 3/4", 1"

Parts Exploded View

No. Part Description

1. Cover Assembly
2. Relief Valve Assembly
3. Relief Valve Spring
4. Inlet Check Valve Assembly #1
5. Retainer
6. Outlet Check Valve Assembly #2
7. Inlet Shut-Off Valve
8. Clamp Assembly
9. Test Cocks
10. Outlet Shut-Off Valve
11. Body Assembly
12. Funnel



A.R.I. FLOW CONTROL ACCESSORIES Ltd.
www.arivalves.com avner@ari.co.il Tel: 858-2328279



USA Distributor Tel: (954) 980-9850 Email: cjhart@ubsbackflow.com

LIST RP-501